



# Threads



Gütermann **creativ** stitch

# Thread Contents

## Thread Characteristics

3-5

### Gutermann Thread

Sew <b>All</b>	6
Natural <b>Cotton</b>	7
Quilting	7
Cotton <b>Machine Embroidery</b>	8
Extra / <b>Upholstery</b>	8
Silk	9
Linen	9
Jeans	9
Top Stitch	10
Metallic <b>Effect</b>	10
Bobbin	10

### Gutermann Sulky Thread

Sulky Rayon <b>Machine Embroidery</b>	11
Sulky Metallic <b>Machine Embroidery</b>	12
Sulky <b>Sliver</b>	12
Sulky <b>Holoshimmer</b>	12
Sulky <b>Glowy</b>	13
Sulky <b>Solar</b>	13
Sulky <b>Invisible</b>	13

## Gutermann Thread Stands

Small Counter <b>Stands</b>	14
Medium Counter <b>Stands</b>	14
Sulky Counter <b>Stands</b>	15
Wide Counter <b>Stands</b>	15
Large Sew All Counter <b>Stands</b>	16
Sew All Floor <b>Stands</b>	17
Assorted Floor <b>Stands</b>	18

## QA & Stitch Thread

QA 500m <b>Retail Pack</b>	19
Stitch 500m <b>Thread</b>	19
Stitch 1000m <b>Thread</b>	19
Stitch 2000m <b>Thread</b>	20
Stitch 5000m <b>Overlocking Thread</b>	20




Trendy Trims Limited  
www.trendytrims.co.nz  
p: 09 634 4531 • f: 09 634 6391  
e: trendy@trendytrims.co.nz



trendytrims.co.nz




## Sew All Thread

Reel Length: 100m, 250m, 500m, 1000m  
Composition: 100% Polyester  
Washing Instructions:   
Recommended Needle Size:  
Universal Needle HA 70-90

Suitable for all fabrics, for hand and machine sewing. It combines the excellent sewing properties of silk with the strength and durability in the seam of polyester. Knot-free




## Natural Cotton Thread

Reel Length: 100m, 250m, 800m  
Composition: 100% Mercerized Cotton  
Washing Instructions:   
Recommended Needle Size:  
Universal Needle HA 60-80

Fine but strong with a silk-like lustre. For those who prefer to sew with natural fibres. Suitable for hand and machine sewing




## Quilting Thread

Reel Length: 200m  
Composition: 100% Mercerized Cotton  
Washing Instructions: 

Fine but strong with a waxed finish which gives Gütermann Quilting Thread added strength and ensures that it never tangles. Suitable for hand sewing




## Extra/Upholstery Thread

Reel Length: 100m  
Composition: 100% Polyester  
Washing Instructions:   
Recommended Needle Size:  
Universal Needle HA 70-100

Strong but fine thread for all repair jobs on heavy weight fabrics. Suitable for hand and machine sewing




## Silk Thread

Reel Length: 100m  
Composition: 100% Silk  
Washing Instructions:   
Recommended Needle Size:  
Universal Needle HA 80

Synonymous with quality and luxury. Suitable for hand and machine sewing



## Linen Thread

Reel Length: 50m  
Composition: 100% Linen  
Washing Instructions: 

Strong and very tear-resistant natural thread for sewing by hand. For sewing on buttons and stiff or heavy duty materials and woven fabrics (e.g. rucksacks & bags)



## Top Stitch Thread

Reel Length: 30m  
Composition: 100% Polyester  
Washing Instructions:

A strong heavy polyester thread with a high lustre, ideal for bold decorative sewing, button-holing and button sewing. Best results are achieved with Gütermann Top Stitch in the needle and Sew-all Thread in the bobbin



## Jeans Thread

Reel Length: 100m  
Composition: 70% Polyester, 30% Cotton  
Washing Instructions:   
Recommended Needle Size:  
Universal Needle 80-100

For darning jeans by hand or with sewing machine, for overlocking and safety seams, for fine ornamental stitches and decorative seams. Optimal colour adaptation to jeans material using bi-colour optics



## Metallic Effect Thread

Reel Length: 50m  
Composition: 70% Polyamide, 30% Polyester  
Washing Instructions:   
Recommended Needle Size:  
Universal Needle HA 100-110

For ornamental stitches and decorative seams, for creative crafting ideas. Results in sparkling and twinkling effects



## Sulky Machine Cotton 30 Thread

Reel Length: 300m  
Composition: 100% Cotton  
Washing Instructions:   
Recommended Needle Size:  
Embroidery Needle HA 90

A universal 100% cotton machine embroidery thread suitable for all embroidery with wool character. Ideal for many embroidery techniques and for machine quilting



## Sulky Machine Embroidery Thread

Reel Length: 200m, 500m  
Composition: 100% Viscose  
Washing Instructions:   
Recommended Needle Size:  
Embroidery Needle HA 75-80

A universal machine embroidery thread suitable for all forms of machine embroidery. Thread gives a beautiful shimmer, similar to silk, that adds elegance to all machine embroidery




## Sulky Metallic Machine Embroidery Thread

Reel Length: 200m, 500m  
Composition: 60% Polyamide, 40% Polyester  
Washing Instructions:   
Recommended Needle Size:  
Embroidery Needle HA 80-90

A special metallic effect thread. Especially suited to the embellishment of festive apparel, decorative tablewear, cushions and general household items




## Sulky Solar Thread

Reel Length: 100m  
Composition: 100% Polyester  
Washing Instructions:   
Recommended Needle Size:  
Embroidery Needle HA 75-90

A universal machine embroidery thread for all embroidery motifs which change their colour. If UV light falls on the embroidery thread the thread changes colour




## Sulky Glow Thread

Reel Length: 100m  
Composition: 100% Polyester  
Washing Instructions:   
Recommended Needle Size:  
Embroidery Needle HA 75-90

A universal machine embroidery thread for all embroidery motifs which glow in the dark. The embroidery thread stores sunlight or UV light and glows in the dark, the length of time exposed to the light determines the intensity of the luminosity



## Sulky Sliver Thread

Reel Length: 200m  
Composition: 60% Polyester, 40% Polyethylene  
Washing Instructions:   
Recommended Needle Size:  
Embroidery Needle HA 80-90

A universal metallic effect thread made from fine strips for all embroidery motifs, for highly sparkly and twinkling effects. For ornamental stitches and decorative seams




## Sulky Holoshimmer Thread

Reel Length: 200m  
Composition: 60% Polyester, 40% Polyethylene  
Washing Instructions:   
Recommended Needle Size:  
Universal Needle HA 75-80

Holographic metallic effect thread for all embroidery motifs. Particularly beautiful effects in the case of embroidery motifs with a wide satin stitch and low stitch density




## Sulky Invisible Thread

Reel Length: 200m  
Composition: 100% Polyamide  
Washing Instructions:   
Recommended Needle Size:  
Embroidery Needle HA 75-80

Should be used when the thread and seam should not be visible. Is a fine, tear-resistant and transparent monofilament thread



## Sulky Bobbin Thread

Reel Length: 200m, 500m  
Composition: 100% Polyester  
Washing Instructions: 

Ideal under bobbin thread for all machine embroideries, very fine, supple and tear-resistant. Results in a first-class embroidery motif



# Sew All Thread



**GP** Sew All Thread  
**Size:** 100m, 250m, 500m, 1000m  
**Unit:** 1  
**Pack:** 5



Suitable for all fabrics, particularly on synthetic and blended fabrics. for hand and machine sewing. It combines the excellent sewing properties of silk with the strength and durability in the seam of polyester. 100% Polyester

000	673	815	851	289	461	81	211	716	786	76	328	946	456	340	676	972
800	467	252	850	868	474	624	663	321	68	64	53	715	472	237	689	274
111	222	816	887	722	52	730	320	877	74	655	28	736	561	931	531	861
1	406	540	591	131	126	226	662	718	521	656	385	332	639	556	264	304
802	817	308	265	118	245	910	372	247	37	143	761	714	919	925	258	269
414	774	671	249	299	991	384	659	512	112	71	482	55	920	167	825	597
5	767	780	186	169	844	375	210	259	435	75	25	763	296	915	824	399
610	280	21	464	421	473	108	658	129	593	276	483	192	913	403	432	35
3	650	674	199	170	79	130	586	517	537	193	903	331	821	402	528	635
6	450	697	208	121	377	429	660	257	213	194	966	924	914	239	288	636
893	934	682	160	198	938	369	43	440	759	195	904	929	148	401	886	36
488	847	769	263	215	165	368	758	575	86	196	967	297	707	205	397	141
415	649	696	139	422	587	367	889	324	66	197	339	100	766	833	286	93
7	448	23	842	216	895	46	728	125	218	386	387	234	687	396	582	95
325	412	694	179	428	896	26	985	128	463	278	32	191	164	154	283	799
578	612	446	444	883	155	837	984	512	203	965	665	235	302	152	585	542
327	307	454	19	175	351	365	890	875	631	322	310	107	827	153	132	190
580	968	209	180	262	285	491	986	127	810	315	711	189	553	336	495	755
177	416	724	453	174	932	156	733	202	391	959	11	223	555	334	241	702
852	300	439	124	230	982	364	382	441	158	316	13	598	18	616	261	634
106	979	672	423	478	80	16	909	568	442	311	309	595	916	292	633	788
417	350	669	480	227	519	927	383	291	373	78	232	487	869	282	854	545
362	188	469	727	221	589	926	82	571	392	312	214	764	870	818	503	700
643	8	38	224	493	496	497	701	40								

\* Please Note: Not all colours available in all sizes

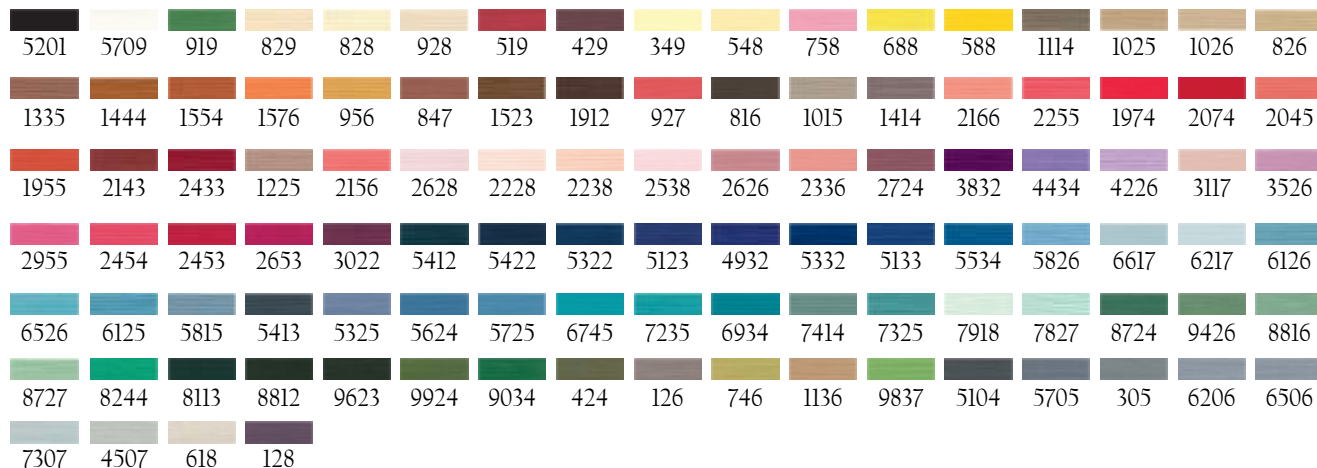
# Natural Cotton Thread



**GN** Natural Cotton Thread  
**Size:** 100m, 250m, 800m  
**Unit:** 1  
**Pack:** 5



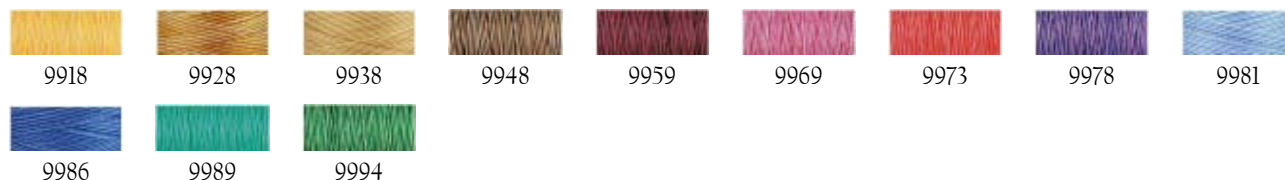
Fine but strong with a silk-like lustre. For those who prefer to sew with natural fibres. Suitable for hand and machine sewing. 100% Natural Cotton



Please Note: Not all colours available in all sizes

**GN** Natural Cotton Variegated  
**Size:** 800m  
**Unit:** 1  
**Pack:** 5

Fine but strong with a silk-like lustre. For those who prefer to sew with natural fibres. Suitable for hand and machine sewing  
 100% Natural Cotton

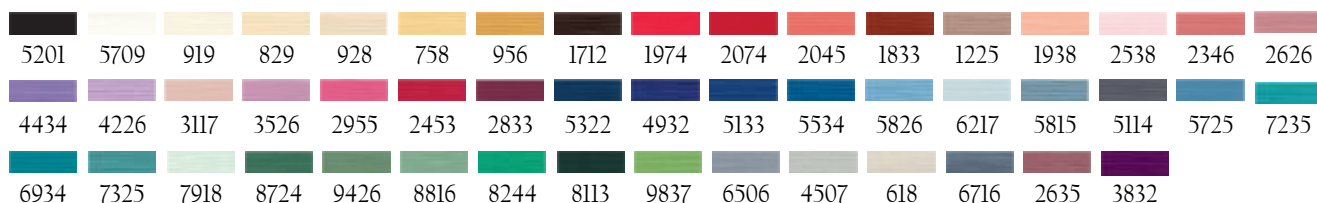


# Quilting Thread

**GQ** Quilting Thread  
**Size:** 200m  
**Unit:** 1  
**Pack:** 5



Fine but strong with a waxed finish which gives Gütermann Quilting Thread added strength and ensures that it never tangles. Suitable for hand sewing. 100% Mercerized Cotton



# Cotton Machine Embroidery Thread



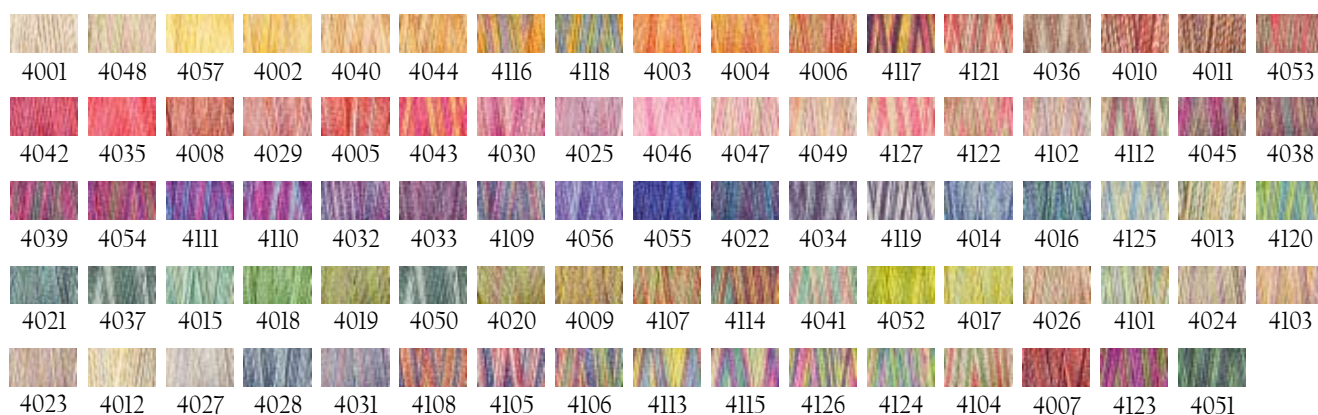
**GE** Cotton Machine Embroidery  
**Size:** 300m  
**Unit:** 1  
**Pack:** 5



Universal machine embroidery thread made from 100% cotton, designed for embroidery motifs with wool character. Ideal for machine quilting. 100% Cotton



## Cotton Embroidery Variegated

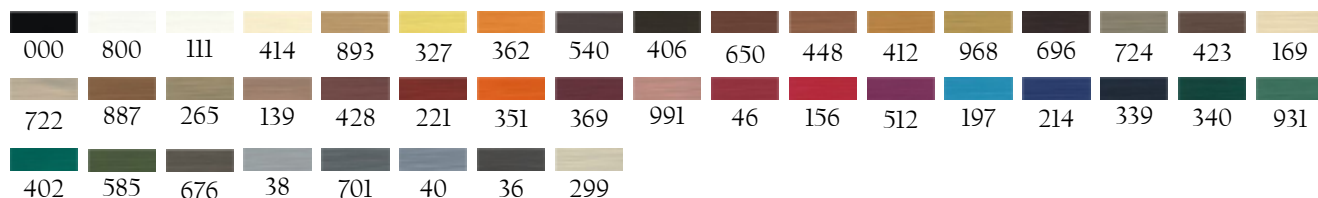


## Extra / Upholstery Thread

**GX** Extra/Upholstery Thread  
**Size:** 100m  
**Unit:** 1  
**Pack:** 5



For all heavily-stressed seams, ideal for the sewing of jeans material and specially suitable for rugged repair work. For heavy woven fabrics, leather and canvas covers. 100% Polyester





# Silk Thread



**GK** Silk Thread  
**Size:** 100m  
**Unit:** 1  
**Pack:** 5



Pure silk is designed for fine seams with an elegant look.  
 Soft & luxurious with superb sewing properties.  
 100% Spun Silk

000	800	802	001	414	050	005	186	893	325	580	286	898	968	416	104	412	448
450	280	887	180	453	139	422	215	174	230	694	767	446	817	540	769	697	696
023	423	454	969	669	439	815	724	199	868	179	464	722	131	198	421	114	838
938	979	350	982	351	155	364	156	365	046	026	367	368	369	130	370	267	730
474	473	890	889	660	043	213	218	810	571	391	158	440	127	125	568	320	441
211	321	247	733	384	812	909	017	927	896	587	586	658	659	965	311	435	964
074	143	071	195	196	197	386	322	315	214	312	905	232	309	310	711	665	387
339	904	483	025	919	835	237	396	153	401	402	403	340	238	018	472	707	764
869	916	107	925	100	913	924	553	331	714	715	761	282	283	582	585	921	841
531	688	432	824	269	304	861	783	036	093	542	702	701	089	700	040	038	008

# Linen Thread

**GL** Linen Thread  
**Size:** 50m  
**Unit:** 1  
**Pack:** 5



Strong and very tear-resistant natural thread for sewing by hand. For sewing on buttons and stiff or heavy duty materials and woven fabrics (e.g. rucksacks & bags). 100% Linen

1314	4010	4011	4012	4013	5129	5905	7202
------	------	------	------	------	------	------	------

# Jeans Thread

**GJ** Jeans Thread  
**Size:** 100m  
**Unit:** 1  
**Pack:** 5



For darning jeans by hand or with sewing machine, for overlocking and safety seams, for fine ornamental stitches and decorative seams. Optimal colour adaptation to jeans material using bi-colour optics. 100% Cotton

5154
------

# Top Stitch Thread



**GH** Top Stitch Thread  
**Size:** 30m  
**Unit:** 1  
**Pack:** 5



A strong heavy polyester thread with a high lustre, ideal for bold decorative sewing, button-holing and button sewing. Best results are achieved with Gütermann Top Stitch in the needle and Sew-all Thread in the bobbin. 100% Polyester

000	800	111	1	802	414	5	610	893	415	325	578	852	417	650	448	412
968	300	696	694	446	724	727	124	169	299	722	887	186	464	199	139	444
170	215	216	883	230	221	80	982	351	896	368	369	130	375	384	81	474
52	126	245	991	473	165	46	365	156	364	16	82	909	382	733	890	758
512	128	575	440	259	247	877	321	716	211	663	320	662	659	658	586	127
441	568	291	392	442	158	391	810	631	218	86	759	112	315	322	965	278
386	196	194	193	75	71	143	656	64	68	74	311	214	232	309	13	310
339	903	761	28	487	223	189	107	235	234	297	331	192	55	714	736	715
328	18	827	821	561	472	237	261	854	503	818	152	396	401	239	402	167
132	585	283	582	397	432	824	825	258	531	304	269	597	8	38	493	496
701	40	634	702	93	36											

# Metallic Effect Thread

**GM** Metallic Effect Thread  
**Size:** 50m  
**Unit:** 1  
**Pack:** 5



For ornamental stitches and decorative seams, for creative crafting ideas. Results in sparkling and twinkling effects. 70% Polyamide, 30% Polyester

041	024	036	071	624	247	571	143	315	483	235	400
-----	-----	-----	-----	-----	-----	-----	-----	-----	-----	-----	-----

# Bobbin Thread

**JZ** Bobbin Thread  
**Size:** 200m  
**Unit:** 1  
**Pack:** 5



Ideal under bobbin thread for all machine embroideries, very fine, supple and tear-resistant. Results in a first-class embroidery motif. 100% Polyester

1001	1005
------	------

# Sulky Rayon Machine Embroidery Thread



**GV** Sulky Rayon Machine  
Embroidery Thread  
**Size:** 200m, 500m  
**Unit:** 1  
**Pack:** 5

A universal machine embroidery thread suitable for all forms of machine embroidery. Thread gives a beautiful shimmer, similar to silk, that adds elegance to all machine embroidery.  
100% Viscose

1005	1001	1002	1071	1022	1061	1135	1067	1187	1023	1124	1167	1070	502	567	1159	1025
1185	1137	1024	1238	1065	1168	1078	1184	1239	1217	1237	1081	1216	1054	1149	1082	1127
1055	1126	1056	1128	1266	1179	1170	1129	1130	1059	1131	1247	1057	1158	568	621	1021
1313	1214	1264	1035	1169	1263	1181	1246	1037	1147	1039	1317	1257	1020	1019	619	1258
1017	1120	1064	1225	1115	1121	1108	1117	1016	1154	1213	1297	1298	1235	1301	1112	1195
1299	1215	1189	1545	1309	1192	1191	1034	1190	1119	1304	1533	1231	1188	1307	1511	1109
1256	1224	1031	1111	1080	1255	1122	1194	1032	1193	1254	1296	1030	1561	1226	1535	1293
572	1042	1200	1197	1182	1043	1044	643	1202	1294	1283	1252	1560	1205	1090	1251	1250
1172	1291	1295	1165	1203	1151	1223	1074	1248	1222	1028	1029	1196	1201	1134	1534	1253
526	1076	1198	1095	1513	1503	1046	1288	1045	1204	1077	1063	1275	1047	1100	1104	1332
1177	1276	1510	1049	1101	1278	1051	1079	1232	1174	1550	1103	1321	1270	1508	1175	1176
1208	1517	1230	1552	1286	1536	1162	1171	1206	1285	580	1287	1212	1211	1228	1227	1156
630	1173	1272	1210	1180	1085	1218	1327	1236	1011	1219	1041	1166	1240	1220	1234	

## Sulky Embroidery Variegated

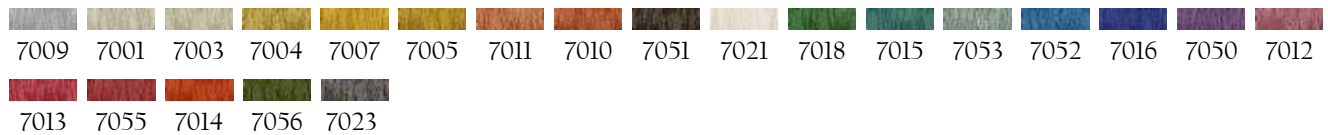
2117	2134	2103	2119	2120	2133	2127	2116	2102	2123	2122	2101	2100	2121	2109	2114	2131
2115	2111	2113	2112	2110	2132	2105	2104	2106	2107	2125	2202	2201	2203	2246	2206	2243
2245	2244	2242	2241	2247	2240											

# Sulky Metallic Machine Embroidery Thread



**GW** Sulky Metallic Machine  
Embroidery Thread  
**Size:** 200m, 500m  
**Unit:** 1  
**Pack:** 5

A special metallic effect thread. Especially suited to the embellishment of festive apparel, decorative tablewear, cushions and general household items.  
60% Polyamide, 40% Polyester



## Sulky Embroidery Variegated



## Sulky Sliver Thread

**JJ** Sulky Sliver Thread  
**Size:** 100m  
**Unit:** 1  
**Pack:** 5



A universal metallic effect thread made from fine strips for all embroidery motifs, for highly sparkly and twinkling effects. For ornamental stitches and decorative seams.  
60% Polyester, 40% Polyethylene



## Sulky Holoshimmer Thread

**JE** Sulky Holoshimmer Thread  
**Size:** 100m  
**Unit:** 1  
**Pack:** 5

Holographic metallic effect thread for all embroidery motifs. Particularly beautiful effects in the case of embroidery motifs with a wide satin stitch and low stitch density  
60% Polyester, 40% Polyethylene



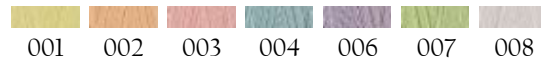
# Sulky Glow Thread



**JG** Sulky Glow Thread  
**Size:** 100m  
**Unit:** 1  
**Pack:** 5



A universal machine embroidery thread for all embroidery motifs which glow in the dark. The embroidery thread stores sunlight or UV light and glows in the dark, the length of time exposed to the light determines the intensity of the luminosity  
100% Polyester

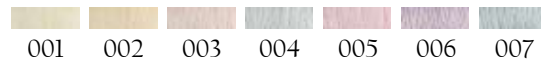


# Sulky Solar Thread

**JG** Sulky Solar Thread  
**Size:** 100m  
**Unit:** 1  
**Pack:** 5



A universal machine embroidery thread for all embroidery motifs which change their colour. If UV light falls on the embroidery thread the thread changes colour  
100% Polyester



# Invisible Thread

**IG** Invisible Thread  
**Size:** 200m  
**Unit:** 1  
**Pack:** 5



Should be used when the thread and seam should not be visible. Is a fine, tear-resistant and transparent monofilament thread. 100% Polyamide







## Small Counter Stands



Gütermann Sew-all Thread  
Suitable for all fabrics, for hand and machine sewing. It combines the excellent sewing properties of silk with the strength and durability in the seam of polyester. Knot-free



100% Long Staple Polyester



Counter Stand:  
Height: **38.3cm**  
Length: **38.6cm**  
Depth: **27.5cm**

**GYKA40/1** pictured

<b>GYKA40/1</b>	Sew All Thread	<b>GYKA40/5</b>	500m Sew All	<b>GYKA40/6</b>	30m Top Stitch
<b>Slots:</b>	40	<b>Slots:</b>	24	<b>Slots:</b>	40
<b>Colours</b>	40	<b>Colours</b>	24	<b>Colours</b>	40

<b>GYKA40/14</b>	200m Quilting	<b>GYKA40/7</b>	100m Extra/Upholstery
<b>Slots:</b>	28	<b>Slots:</b>	28
<b>Colours</b>	28	<b>Colours</b>	28

## Medium Counter Stands



Gütermann Sew-all Thread  
Suitable for all fabrics, for hand and machine sewing. It combines the excellent sewing properties of silk with the strength and durability in the seam of polyester. Knot-free



100% Long Staple Polyester



Counter Stand:  
Height: **38.3cm**  
Length: **55cm**  
Depth: **27.5cm**

**GYKA60/1** pictured

<b>GYKA60/1</b>	100m Sew All	<b>GYKA60/6</b>	30m Top Stitch	<b>GYKA60/11</b>	100m Silk
<b>Slots:</b>	60	<b>Slots:</b>	60	<b>Slots:</b>	60
<b>Colours</b>	60	<b>Colours</b>	60	<b>Colours</b>	60

<b>GYKA60/8</b>	100m Natural Cotton	<b>GYKA60/9</b>	250m Natural Cotton	<b>GYKA60/10</b>	800m Natural Cotton
<b>Slots:</b>	60	<b>Slots:</b>	42	<b>Slots:</b>	30
<b>Colours</b>	60	<b>Colours</b>	42	<b>Colours</b>	30



## Sulky Counter Stands



**Gütermann Sulky Cotton 30 Thread**  
A universal 100% cotton machine embroidery thread suitable for all embroidery with wool character. Ideal for many embroidery techniques and for machine quilting.



100% Cotton

### GYKA60/7GS

300m Sulky Machine  
Embroidery Cotton Varigated

**Slots:** 42

**Colours:** 42

### GYKA80/4GS

300m Sulky Machine  
Embroidery Cotton

**Slots:** 56

**Colours:** 56



Counter Stand:  
Height: **38.3cm**  
Length: **55cm**  
Depth: **27.5cm**



Counter Stand:  
Height: **38.3cm**  
Length: **71.4cm**  
Depth: **27.5cm**

## Wide Counter Stands



**Gütermann Sew-all Thread**  
Suitable for all fabrics, for hand and machine sewing. It combines the excellent sewing properties of silk with the strength and durability in the seam of polyester.  
Knot-free



100% Long Staple Polyester



Counter Stand:  
Height: **38.3cm**  
Length: **71.4cm**  
Depth: **27.5cm**

**GYKA80/1**  
pictured

<b>GYKA80/1</b>	100m Sew All	<b>GYKA80/3</b>	250m Sew All	<b>GYKA80/12</b>	200m Quilting
<b>Slots:</b>	80	<b>Slots:</b>	56	<b>Slots:</b>	56
<b>Colours:</b>	80	<b>Colours:</b>	56	<b>Colours:</b>	50
<b>GYKA80/7</b>	100m Natural Cotton	<b>GYKA80/8</b>	250m Natural Cotton	<b>GYKA80/9</b>	800m Natural Cotton
<b>Slots:</b>	80	<b>Slots:</b>	56	<b>Slots:</b>	40
<b>Colours:</b>	80	<b>Colours:</b>	56	<b>Colours:</b>	40
<b>GYKA80/13</b>	30m Top Stitch & 100m Extra/Upholstery				
<b>Slots:</b>	40 & 28				
<b>Colours:</b>	80 & 28				



## Large Sew All Counter Stands



Gütermann Sew-all Thread  
Suitable for all fabrics, for hand and machine sewing. It combines the excellent sewing properties of silk with the strength and durability in the seam of polyester. Knot-free



100% Long Staple Polyester

**GYKT120/1** 100m Sew All  
**Slots:** 120  
**Colours:** 118



Counter Stand:  
Height: **61.5cm**  
Length: **55cm**  
Depth: **27.5cm**



Gütermann Sew-all Thread  
Suitable for all fabrics, for hand and machine sewing. It combines the excellent sewing properties of silk with the strength and durability in the seam of polyester. Knot-free



100% Long Staple Polyester

**GYKT160/1** 100m Sew All  
**Slots:** 160  
**Colours:** 158



Counter Stand:  
Height: **61.5cm**  
Length: **71.4cm**  
Depth: **27.5cm**



## Sew All Floor Stands



Gütermann Sew-all Thread  
Suitable for all fabrics, for hand and machine sewing. It combines the excellent sewing properties of silk with the strength and durability in the seam of polyester. Knot-free



100% Long Staple Polyester

### GYK168/7 Floor Stand includes:

250m Sew All

**Slots:** 60

**Colours:** 60

500m Sew All

**Slots:** 45

**Colours:** 36

1000m Sew All

**Slots:** 2

**Colours:** 2



Floor Stand:  
Height: **149.5cm**  
Length: **38.6cm**  
Depth: **40cm**



Gütermann Sew-all Thread  
Suitable for all fabrics, for hand and machine sewing. It combines the excellent sewing properties of silk with the strength and durability in the seam of polyester. Knot-free



100% Long Staple Polyester

### GYK336/1 100m Sew All

**Slots:** 336

**Colours:** 330



Floor Stand:  
Height: **149.5cm**  
Length: **71.4cm**  
Depth: **40cm**





## Assorted Floor Stands

### GYK252/12 Floor Stand includes:

100m Sew All	500m Sew All
<b>Slots:</b> 120	<b>Slots:</b> 21
<b>Colours</b> 118	<b>Colours</b> 21

1000m Sew All	30m Top Stitch
<b>Slots:</b> 2	<b>Slots:</b> 40
<b>Colours</b> 2	<b>Colours</b> 40

### 1000m Extra / Upholstery

<b>Slots:</b> 30
<b>Colours</b> 30

### GYK252/1 Floor Stand includes:

100m Sew All
<b>Slots:</b> 252
<b>Colours</b> 248

### GYK252/4 Floor Stand includes:

100m Sew All	250m Sew All
<b>Slots:</b> 210	<b>Slots:</b> 15
<b>Colours</b> 206	<b>Colours</b> 15

### 500m Sew All

<b>Slots:</b> 12
<b>Colours</b> 12

### GYK252/8 Floor Stand includes:

100m Natural Cotton	250m Natural Cotton
<b>Slots:</b> 84	<b>Slots:</b> 62
<b>Colours</b> 84	<b>Colours</b> 62

### 800m Natural Cotton

<b>Slots:</b> 42
<b>Colours</b> 42

### GYKA252/14 Floor Stand includes:

100m Natural Cotton	300m Machine Cotton Embroidery
<b>Slots:</b> 120	<b>Slots:</b> 45
<b>Colours</b> 118	<b>Colours</b> 45

### 200m Hand Quilting

<b>Slots:</b> 45
<b>Colours</b> 45



GYK252/12 pictured

Floor Stand:  
Height: **149.5cm**  
Length: **71.4cm**  
Depth: **40cm**



# QA & Stitch Sewing Thread



## QA Thread



**QA.P1** 500m Essential Colours Pack  
**Type:** 100% Polyester  
**Unit:** 10 Spools  
**Pack:** 1

**QA.P2** 500m Fashion Colours Pack  
**Type:** 100% Polyester  
**Unit:** 10 Spools  
**Pack:** 1

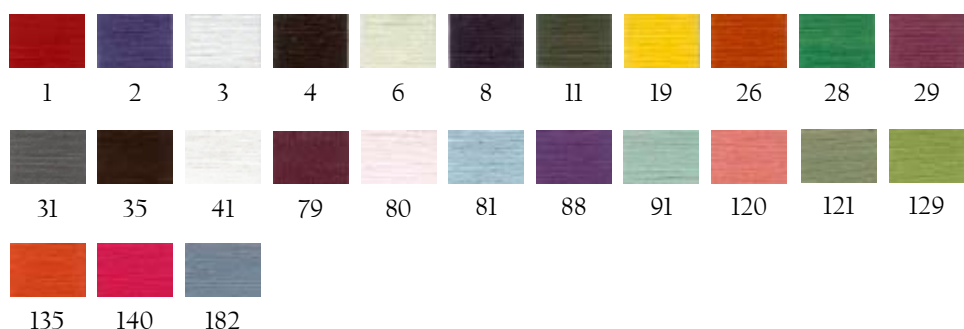
## stitch Stitch Thread



**QA** 500m  
**Type:** 100% Polyester  
**Unit:** 6  
**Pack:** 1



**SG** 1000m  
**Type:** 100% Polyester  
**Unit:** 10  
**Pack:** 1





## Stitch Thread

**QA** 2000m  
**Type:** 100% Polyester  
**Unit:** 10  
**Pack:** 1



## Stitch Overlocking Thread



**SG** 5000m  
**Type:** 100% Polyester  
**Unit:** Each  
**Pack:** 1

